

Product Line

Beef & Meats

- Veal
- Lamb
- Goat
- Mutton



Domestic Beef

The American Beef grades are based on two main criteria: the degree of marbling (intramuscular fat) in the beef, and the maturity (estimated age of the animal at slaughter).



Beef Chuck



CUTS

Blade Chuck N/off
Semi-Boneless N/off
Bone-in Shank

GRADES

Choice, Select
CAB, Choice, Select
Choice, Select, No Roll

Chucks/Clods/ Rolls/Tenders



CUTS

Chuck Roll N/off
Chuck Clod
Chuck Clod XT
Chuck Tender

GRADES

CAB, Choice, Select, No Roll
CAB, Choice, Select, No Roll
CAB, Choice, Select, No Roll
CAB, Choice, Select, No Roll



Beef Rounds

Knuckles/Insides



CUTS

Peeled Knuckle
 Inside Round
 Inside Round XT
 Denuded Inside
 Cap-off Inside

GRADES

CAB, Choice, Select, No Roll, Utility
 CAB, Choice, Select, No Roll
 CAB, Choice, Select
 Prime, CAB, Choice, Select, No Roll
 CAB

Beef Rounds

Eye/Gooseneck/Flats



CUTS

Gooseneck
 Eye Round
 Flat Round

GRADES

CAB, Choice, Select
 CAB, Choice, Select, No Roll, Utility
 CAB, Choice, Select, No Roll

Beef Ribs

Ribeyes



CUTS

Lipon Ribeye
 Export Rib
 109 Rib

GRADES

Prime, CAB, Choice, Select, No Roll, Utility
 CAB, Choice, Select, No Roll
 CAB, Choice, Select

Beef Ribs

Back/Short Ribs



CUTS

Chuck Short Rib
 Rib Short Rib
 Frozen Back Rib

GRADES

Choice, Select, No Roll, Utility
 CAB, Choice, Select, No Roll
 Choice, Select



Beef Loins

Top Butt/Ball/Tri-Tip



CUTS

Top Butt
2/Up Ball Tip
Tri-Tip
Culotte

GRADES

Prime, CAB, Choice, Select, No Roll, Roll, Utility
Prime, CAB, Choice, Select, No Roll, Roll
CAB, Choice, Select, No Roll
CAB, Choice, Select, No Roll

Beef Loins

Strips



CUTS

2x3 Strip
1x1 Strip
0x1 Strip

GRADES

Choice, Select, No Roll
Prime, CAB, Choice, Select, No Roll, Roll, Utility
Prime, CAB, Choice, Select, No Roll, Roll, Utility

Beef Loins

Short Loins



CUTS

Short Loin
0x1 Short Loin

GRADES

Prime, CAB, Choice, Select, No Roll, Roll, Utility
Prime, CAB, Choice, Select, No Roll

Beef Loins

Tenderloins & PSMOs



CUTS

5/Up PSMO
UT Tender 2/3 - 3/4
UT Tender 4/5, 5/Up

GRADES

Prime, CAB, Choice, Select, No Roll
Utility
Utility



Thin Meats



CUTS

Flapmeat
Flank Steak
Inside Skirt
Peeled Outside Skirt
Outside Skirt
Pectoral Meat
SP Trim/Blade Meat
Brisket

GRADES

Prime, CAB, Choice, Select, No Roll, Utility
CAB, Choice, Select, No Roll, Utility
CAB, Choice, Select, No Roll
CAB, Choice, Select, No Roll
CAB, Choice, Select, No Roll, Utility
CAB, Choice, Select, No Roll
CAB, Choice, Select, No Roll
CAB, Choice, Select, No Roll

Grinds



PRODUCTS

73/27 Fine Grind
81/19 Fine Grind
90/10 Fine Grind
93/07 Fine Grind

Offals



CUTS

Oxtail
Cowtail
S&D Liver
Select Liver
Sliced Liver
Scalded Tripe
Honeycomb Tripe
Beef Feet
Tongue #1 & #2
Cheek Meat
Head Meat
Heart
Kidney
Sweetbread
Neckbone
Femur
Intestine

GRADES

Cow, Beef, Fresh CVP, Frozen Bulk
Cow, Beef, Fresh CVP, Frozen Bulk
Cow, Beef, Fresh CVP, Frozen Bulk
Cow, Beef, Fresh CVP, Frozen Bulk
Cow, Beef, Fresh CVP, Frozen Bulk
Cow, Beef, Fresh CVP, Frozen Bulk
Cow, Beef, Fresh CVP, Frozen Bulk
Cow, Beef, Fresh CVP, Frozen Bulk
Cow, Beef, Fresh CVP, Frozen Bulk
Cow, Beef, Fresh CVP, Frozen Bulk
Cow, Beef, Fresh CVP, Frozen Bulk
Cow, Beef, Fresh CVP, Frozen Bulk
Cow, Beef, Fresh CVP, Frozen Bulk
Cow, Beef, Fresh CVP, Frozen Bulk
Cow, Beef, Fresh CVP, Frozen Bulk
Cow, Beef, Fresh CVP, Frozen Bulk
Cow, Beef, Fresh CVP, Frozen Bulk
Cow, Beef, Fresh CVP, Frozen Bulk

Imported Beef

We offer some of the finest meats from the world! Mexico, Central America, Australia, Ireland & much more. Variety, quality, and value; that's our promise!



Mexican Beef

Fresh



CUTS	PK	SIZE	AVG NET WT.
Shortloin 0x1	3	18lb	55lb
Ribeye Lipon 1x1	7	9lb	65lb
Bone-in Ribeye (Export Rib)	5	13lb	65lb
Flap Meat CVP	16	3.5lb	65lb
Striploin 0x1	7	8.5lb	70lb
Outside Skirt Pld 2/CVP	10	2lb	20lb
Flank Steak 2/pk	10	2lb	20lb
Butt Tender	12	1.5lb	25lb
Beef Oxtails Cut	10	2.5lb	25lb
Beef Backrib 2/CVP	20	2.5lb	55lb
Beef Chuck Shortrib	10	6lb	60lb
Beef Top Butt	5	10lb	55lb
Beef Bone-in Hindshank	4	15lb	60lb
Beef Neckbone CVP	20	3lb	60lb



Central American Beef

Fresh



CUTS	PK	SIZE	AVG NET WT.
Top (Inside)	4	15lb	60lb
Outside Round (Flat)	6	8-9lb	50lb
Knuckle (Tip)	6	9lb	55lb
Chuck Tender	18	3lb	50lb
Strip Loin, Boneless	9	6lb	55lb
Bottom Sirloin Butt, Flapmeat	3	14/2lb	60lb
Top Sirloin Butt, CC,	9	6lb	54lb
Tri-Tip, Boneless	9	6lb	55lb
Eye Round	14	4lb	55lb
Flank Steak	3	14lb	55lb
Tenderloin, Full, Side Muscle On	11	4lb	45lb
Heart Clod	6	8lb	50lb

Australian Beef

Fresh



CUTS	PK	SIZE	AVG NET WT.
Eye Round	8	6lb	48lb
Peeled Knuckle	3	13lb	39lb
Culotte Fat On 1 CVP	16	3lb	48lb
Flapmeat 2 CVP	10	3.5lb	35lb
Cap Off Inside	3	14lb	42lb
Boneless Shank 90%	1	60lb	60lb
Bottom Round Flat			

Irish Beef

Fresh

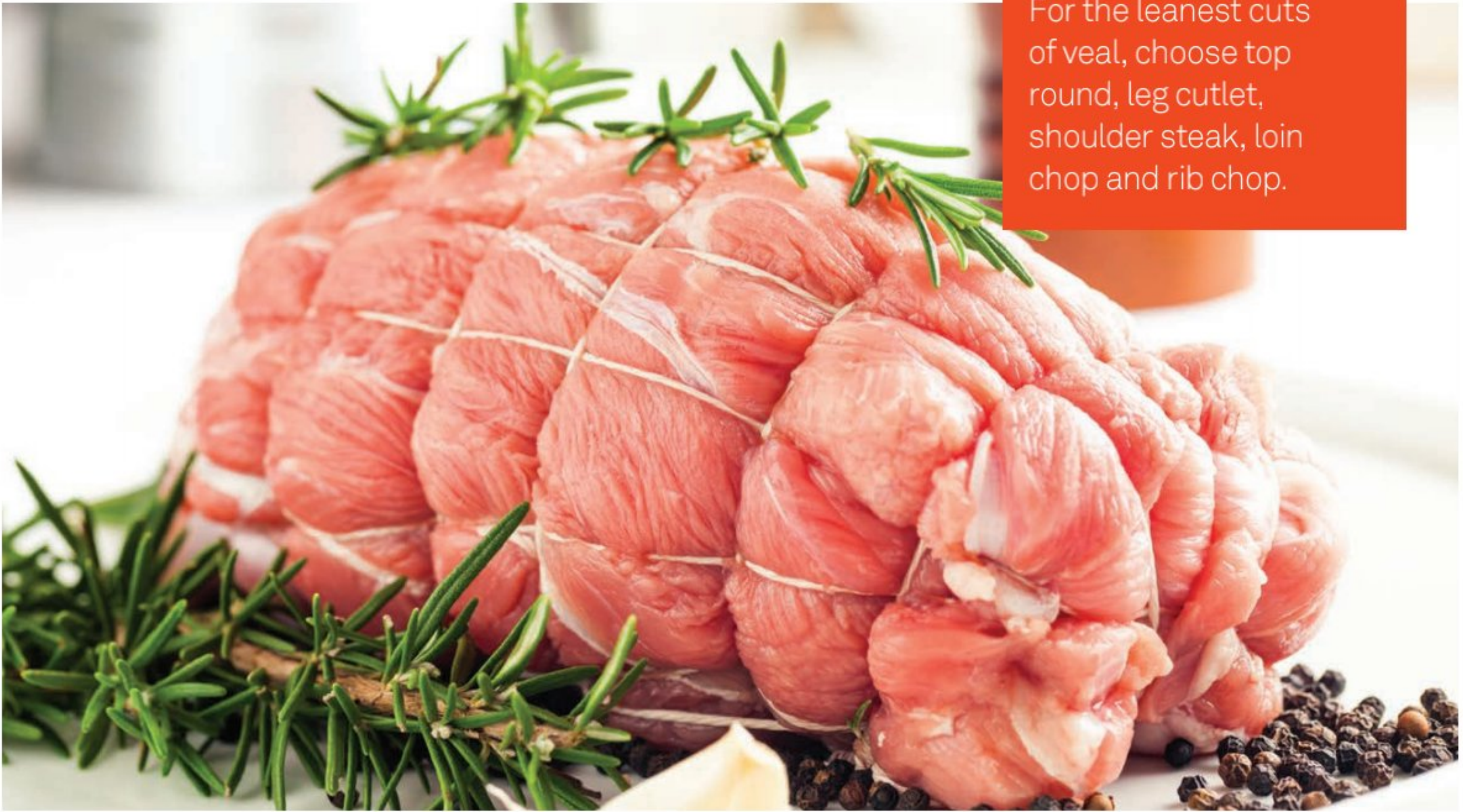


CUTS	PK	SIZE	AVG NET WT.
Chuck Roll, Boneless	3	15-20lb	45-60lb
Flank Steak	5	15lb	75lb
Flap Meat	5	15lb	75lb
Chuck Top Blade	12	4-5lb	48-60lb
Peeled Outside Skirt	18	2lb	36lb
Chuck Clod XT	3	15lb	45lb
Chuck Tender	6	3lb-CVP	18lb
Peeled Knuckle	6	7-8lb	42-48lb



Domestic Veal

Similar to beef, veal has many different cuts readily available. For the leanest cuts of veal, choose top round, leg cutlet, shoulder steak, loin chop and rib chop.



Veal Fresh



CUTS	PK	SIZE	AVG NET WT.
Matambre	1	10lb	10.5lb
Foreshank	4	9.5lb	38lb
Breast	4	11lb	61.1lb
Leg BRT	1	35lb	35lb
Loin	6	7-8lb	51.77lb
Rack 7 Rib	5	9-11lb	66.47lb
Chuck Square Cut	2	30lb	53.52lb
Top Round	1	10lb	8.53lb
Veal Pld Skirt Steak	4	7-9lb	15.93lb

Veal

Frozen



CUTS

- Stew
- Hindshank - Ossobuco
- 2" Cut
- Leg Cutlet 4oz
- Leg Bone-In

PK

- 2
-
- 1
- 1
- 4

SIZE

- 5lb
-
- 10lb
- 10lb
- 9lb

AVG NET WT.

- 10lb
-
- 10lb
- 10lb
- 36lb



Veal Offals

Frozen

CUTS

- Bones
- Kidneys
- Brains
- Liver
- Head
- Tail
- Sweetbreads

PK

- 1
- 1
- 1
- 4
- 3
- 1
- 1

SIZE

- 50lb
- 10lb
- 10lb
- 10lb
- 12lb
- 10lb
- 10lb

AVG NET WT.

- 50lb
- 10lb
- 10lb
- 8.2lb
- 48lb
- 10lb
- 10lb



Lamb

American Lamb is pasture-grazed and then grain-finished for an exceptionally mild and buttery taste.



American Lamb

CUTS

Square Cut Shoulder
Rack
Loin
Leg
Meat
Breast
Shank

Shoulder Roast and Shoulder Chops
Rib Chops and/or Rib Roast
Loin Chops and/or Roast
Leg Roast, Leg Steaks, BRT Legs, Kabob

Denver Rib (low and slow cooking)
Fore or Hind - for Ossobuco



Australian Lamb

Frozen



CUTS	PK	SIZE	AVG NET WT.
Leg Bone-In S/Cut	8	6.25lb	50lb
Leg Bone-In	8	6.5lb	52lb
Leg Boneless BRT	8	5.5lb	44lb
Loin Bone-In	18	2.75lb	49.5lb
Lamb Rack STD	17	2.5lb	42.5lb
Lamb Rack French - Available Sizes			
	12	2/12-14oz	34.2lb
	12	2/14-16oz	33.7lb
	20	16-18oz	33.82lb
	20	18-20oz	40.08lb
Lamb Shank	20	16/24oz	30lb
Lamb SQ Cut Shoulder	12	4-5lb	48lb
Whole Lamb Carcass	1	40 DN	37lb

New Zealand Lamb

Frozen



CUTS	PK	SIZE	AVG NET WT.
Leg Bone-In	8	6.5lb	52lb
Leg Bone-In S/Cut	8	6.25lb	50lb
Leg Boneless BRT	8	5.5lb	44.00lb
Loin Bone-In	20	2lb	40.00lb
Lamb Rack STD	17	2.5lb	42.50lb
Lamb Rack French - Available Sizes			
	12	2/12-14oz	21.80lb
	12	2/14-16oz	22.84lb
	12	2/16-18oz	25.18lb
	15	1/18-20oz	28.17lb
Lamb Shank	20	16/24oz	19.36lb
Lamb SQ Cut Shoulder	10	4lb	44.63lb
Whole Lamb Carcass	1	40 DN	37.00lb



Goat & Mutton

Despite being classified as red meat, goat is leaner and contains less cholesterol, fat, and protein than both lamb and beef.



Goat & Mutton

Frozen



CUTS	PK	SIZE	AVG NET WT.
Goat Cubes Bone-In AU	16	2.2lb	35.27lb
Goat CCS 6 Way 35UP	1	40lb	52.80lb
Burnt Goat 6 Way	1	35lb	33.50lb
Burnt Goat Heads	8	3-5lb	27.00lb
Burnt Goat Feet	1	33lb	33.06lb
Scalded Goat Tripe	1	48.5lb	48.50lb
Mutton CCS 6 Way 45DN	1	45lb	32.02lb
Mutton Leg Bnls AU	10	16-18oz	33.82lb
Mutton Leg Bone-In AU	7	5-7lb	37.34lb
Mutton SQ Cut Shoulder	12	4lb	42.74lb
Mutton French Racks	18	20/24oz	40.00lb

