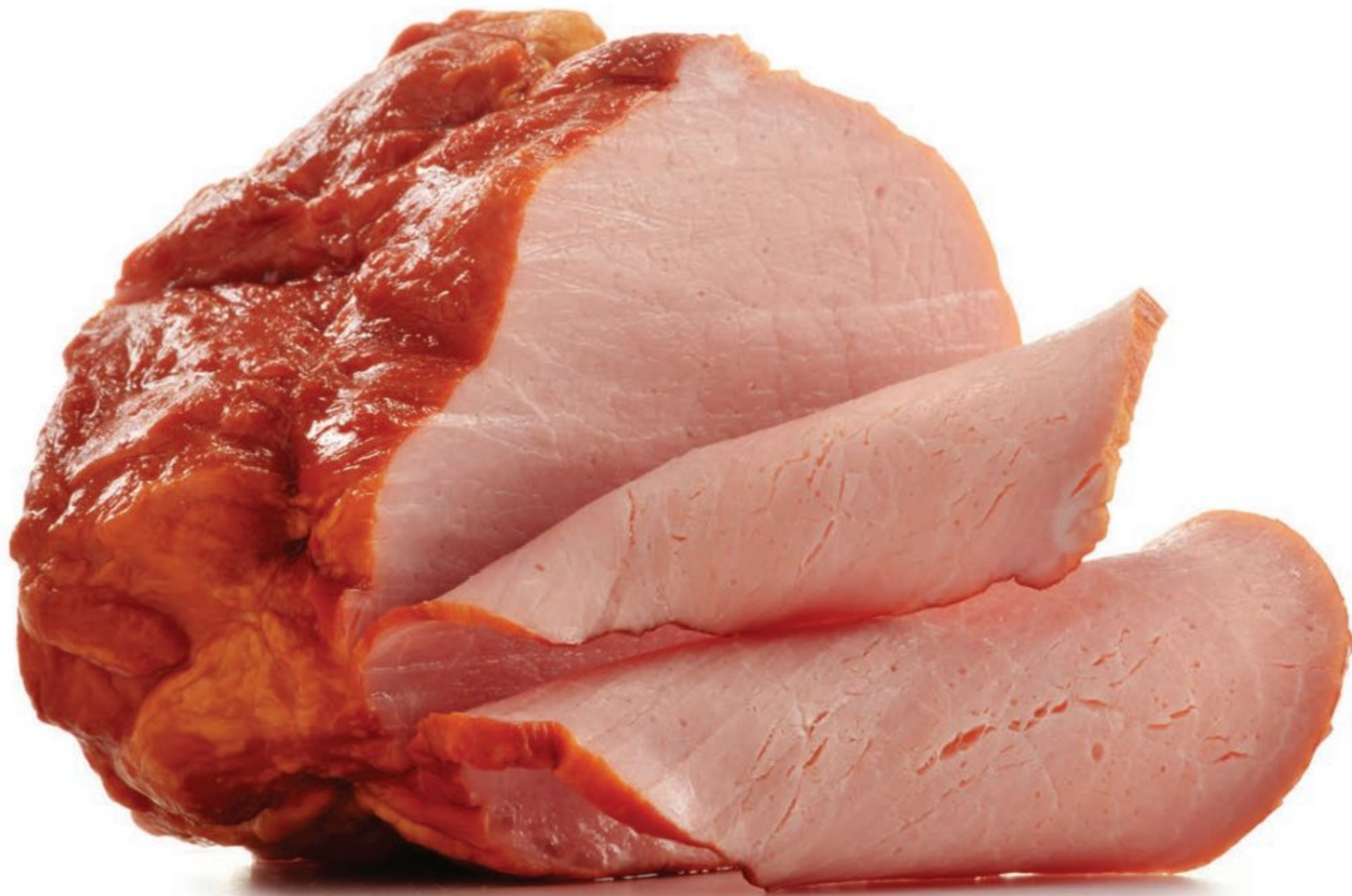


Product Line

Deli



# Deli

Your Deli, Overhauled. Since the beginning of our journey in 1967, we have taken especial care in building and curating our selection of over 300 products for the deli department. Enjoy.



## Hispanic Hams



- |   |          |
|---|----------|
| 332287 - El Toro Old Fashion (Jamón Viejo)    | - 2/10lb |
| 332353 - El Toro Serrano Ham                  | - 2/12lb |
| 332355 - El Toro Serrano Ham Whole Muscle 3pc | - 3/ 9lb |
| 332358 - El Toro Sweet Serrano Ham            | - 2/12lb |
| 332285 - El Toro Bolo Ham                     | - 2/15lb |
| 332660 - Quirch Cooked Seasoned Ham           | - 1/15lb |



Smithfield



## Buffet Hams

---



- 332348 - Farmland Buffet Ham 25% - 3/10lb
- 332340 - Farmland Buffet Ham 35% - 12/2.5lb
- 332360 - B Farmland uffet Ham 35% - 2/10lb

## Hams

---



- 332955 - Carando Virginia Honey Ham W/A - 2/13lb
- 332905 - Carando Virginia Smoked Ham W/A - 2/12lb
- 332532 - Smithfield Country Ham Mild Cure Bone-In - 4/15lb

## 4x6 Hams

---

- 332211 - Farmland Cooked Ham - 2/13lb
- 332212 - Mambo Cooked Ham 35% - 2/12lb
- 332220 - Imperial Cooked Ham 35% - 3/14lb
- 332665 - Quirch Split Seasoned Ckd Ham - 7.5lb
- 332921 - El Toro Sweet Ham - 2/14lb
- 332982 - Farmland Boneless Pit Ham - 1/15lb



## 4x4 Ham

---

- 394845 - Mambo Cooked Ham - 4/7lb

# Hams



## DIETZ & WATSON

342010 - Cooked Square Ham	- 3/12.25lb
342012 - Pear Shaped Baked VA Ham	- 2/13lb
342014 - Black Forest Ham	- 1/10lb
342016 - Honey Cured Ham 97% FF	- 2/7lb
342018 - Cajun Ham W/A	- 1/9lb
394805 - Smoked Maple Glazed Ham	- 1/10.5lb
394807 - Imported Cooked Ham	- 2/11lb
394809 - Chopped Ham w/Natural Juices	- 3/8lb
394811 - Rosemary Ham	- 1/7lb
394813 - Tomato & Basil Ham	- 1/7lb
394815 - Capocollo Ham W/A	- 2/9lb
394816 - Mini Chef Carved BF Ham	- 4/2.5lb
394817 - Mini Chef Carved Nat.Juice Ham	- 1/5lb
394818 - Gourmet Lite VA Ham	- 1/12lb
394819 - Black Pepper Whole Ham	- 1/11.5lb
394820 - Gourmet Lite Tavern Ham	- 1/9lb
394823 - BF Smoked Ham	- 2/5lb
394825 - Honey Roll Ham	- 2/6lb
394826 - Lite F/C Ham w/ Natural Juices	- 1/14lb
394827 - Tavern Ham W/A	- 3/6.5lb
394828 - Peppered Ham W/A	- 2/6.5lb
394829 - Lite VA Ham w/Pineapple	- 2/6lb
394831 - BF Pear Shaped Ham	- 1/12lb
394836 - Classic Trimmed & Tied Ham	- 2/7lb
394837 - Gourmet Lite VA Ham	- 2/5lb
394838 - BF Spiral Sliced Ham	- 4/8.5lb

## ECKRICH

394904 - Black Forest Ham	- 2/7.8-8lb
394905 - Brown Sugar Nugget Ham	- 2/7-7.5lb
394906 - Ham Off the Bone, Smoked, Bnls	- 2/8.7-9lb



## Beef



### DIETZ & WATSON

342066 - Spiced Luncheon Meat	- 3/6lb
342072 - Spiced Pastrami	- 2/4.5lb
342076 - Corned Beef, Choice, Cap-Off	- 2/5lb
395008 - Trimmed & Tied Roast Beef Halves	- 2/8lb
395019 - Corned Beef, Extra Lean	- 2/5lb
395020 - Top Round Roast Beef, London Broil	- 2/6lb
395022 - Prime Rib w/Juices	- 1/6lb
395025 - Roast Beef Halves, Rare	- 2/6lb
395027 - Pastrami Brisket, First Cut	- 2/5lb
395028 - Eye Round Roast Beef, Choice	- 2/6lb
395029 - Roast Beef Halves, Cap Off	- 2/8lb
395030 - Top Round Dried Beef Halves	- 1/9lb
395031 - Oven Roasted Natural Halves, Rare	- 2/8lb
395034 - Pickled Corned Beef Brisket	- 1/15lb
395035 - Roast Beef, Cap-Off	- 2/7lb
395040 - Italian Roast Beef	- 2/8lb
395041 - Premium Angus Roast Beef, Cap-Off	- 2/5.5lb

## Pork

### DIETZ & WATSON

319008 - Roasted Pork, Italian-style	- 1/7lb
319018 - Roasted Pork BBQ	- 1/8lb
341000 - Bacon, Canadian-style	- 2/3.5lb
341005 - Bacon Halves, Derind	- 4/4.5lb
341010 - Bacon, Hotel Layout	- 1/15lb
342074 - Roast Sirloin of Pork	- 1/6lb



## Chicken Breast



### DIETZ & WATSON

342032 - Rotisserie Breast of Chicken	- 2/5.5lb
395012 - Honey BBQ	- 2/4lb
395013 - Buffalo Style	- 2/5lb
395018 - Gourmet Chicken Breast	- 2/4lb
395021 - Southern Fried	- 2/4lb
395033 - Lemon Pepper Chicken Breast	- 2/4.5lb

### ECKRICH

395103 - Browned Chicken Breast	- 2/5-5.3lb
---------------------------------	-------------

# Turkey Breast



## Dietz & Watson

- 221010 - London Broil - 2/6lb
  - 342022 - Original Gourmet - 2/9lb
  - 342024 - Oven Classic - 1/8lb
  - 342026 - Smoked Black Forest - 2/9lb
  - 342028 - Honey Cured Glazed - 2/7lb
  - 395004 - Maple Honey Cured - 2/6.5lb
  - 395005 - Smoked Mesquite - 2/7lb
  - 395006 - Pepper & Garlic - 2/4lb
  - 395007 - Smoked Peppercorn - 2/4lb
  - 395009 - Oven Roasted Homestyle - 2/7lb
  - 395010 - Santa Fe - 2/4lb
  - 395011 - Banquet Cater Style - 1/8lb
  - 395014 - Cracked Black Pepper - 1/9lb
  - 395015 - Gourmet Lite - 2/7lb
  - 395016 - Braised Homestyle - 2/8lb
  - 395024 - Golden Brown - 2/11lb
  - 395032 - Pastrami - 2/6.5lb
  - 395036 - Turkey Breast - No Salt - 1/11lb
- ## Eckrich
- 395069 - Smoked Turkey Breast - 2/9-9.5lb
  - 395070 - Oven Roasted Turkey - 2/9-9.25lb

# Buffet Hams Turkey

- 252100 - Carolina Turkey Bologna - 4/5lb
- 252105 - Carolina Turkey Salami - 4/5lb
- 253610 - Carolina Turkey Ham 20% - 2/6.5lb
- 253704 - Carolina Turkey White Oven Rstd Turkey Slicing - 2/9lb
- 253740 - Carolina Turkey Turkey Pastrami - 4/3.5lb
- 395000 - Country Farms Sknls Whole Muscle Turkey Breast - 2/9lb
- 395003 - Country Farms Brownd Whole Muscle Turkey Brst - 2/9lb





# Deli Meats & Cheeses



## Salamis

- |   |            |
|---|------------|
| 344384 - La Abuelita Spanish Mortadella   | - 2/8lb    |
| 346235 - Carando Pepperoni - Sandw. Stick | - 4/2.25lb |
| 346375 - Carando Hard Salami              | - 3/6.5lb  |
| 346455 - Carando Genoa Salami             | - 3/6lb    |
| 346460 - Venecia Genoa Salami             | - 2/6lb    |
| 346530 - Bremen Hard Salami               | - 2/6lb    |
| 346588 - Higueral Salami Dominicano Orig. | - 6/2.5lb  |
| 347030 - La Abuelita Chorizo Seco Rope    | - 2/5lb    |
| 347036 - La Abuelita Chorizo Cantimpalo   | - 2/3.5lb  |
| 395610 - Higueral Salami Popular Negro    | - 6/2.5lb  |
| 395713 - Colosseum Hard Salami            | - 3/7lb    |
| 395714 - Centurion Hard Salami            | - 3/6.5lb  |





## Salumeria Italian-Style



### DIETZ & WATSON

342000 - Skinless Shank-less Prosciutto	- 1/8lb
342001 - Prosciutto di Parma	- 1/16lb
342002 - Mortadella w/Pistachio	- 2/7.5lb
342003 - Sweet Capocollo	- 3/3.35lb
342004 - Sweet Sopressatta	- 3/9lb
342005 - Hot Capocollo	- 3/3.35lb
342006 - Hard Salami	- 4/3.5lb
342007 - Prosciuttini Italian-style	- 1/7lb
342009 - Mortadella w/Pistachio	- 2/9lb
342011 - Hot Capocollo Ham	- 3/4lb
342013 - Sopressata	- 2/6lb
342044 - Prosciutto	- 2/4.25lb
342046 - Pancetta	- 3/3.25lb
342048 - Mortadella Loaf	- 2/7lb
342052 - Genoa Salami Chub	- 4/3.5lb
342054 - Cooked Salami	- 2/8.5lb
342056 - Pepperoni Chub	- 4/2.75lb
395711 - Hard Salami	- 3/7.25lb

### CARANDO

342420 - Boneless Prosciutto Halves	- 2/4.5lb
344422 - Mortadella Alpina	- 2/4.5lb

## Loaves

### ECKRICH

342019 - Cotto Salami	- 1/9-9.55lb
342063 - Jalapeño Loaf	- 2/9-9.3lb
342065 - Olive Loaf	- 3/3-3.2lb
342067 - Luncheon Loaf	- 1/8.5lb
342069 - P&P Loaf	- 2/9-9.4lb
344001 - Garlic Bologna	- 4/4-4.8lb
344002 - Beef Bologna 1/4 Stick	- 4/4-4.7lb



### DIETZ & WATSON

342064 - Olive Loaf	- 1/7lb
342068 - P & P Loaf	- 1/7lb
344118 - Bologna Meat	- 2/9.5lb
344282 - Braunschweiger/Liverwurst	- 3/6lb
392025 - Wieners Natural Casing	- 4/2.5lb
392400 - Polska Kielbasa Rope	- 3/4lb
394404 - German Knockwurst	- 3/3.35lb
394821 - Head Cheese N/C	- 1/5lb
395700 - Gourmet Lite Bologna	- 1/7lb
395702 - German Bologna	- 2/8lb
395703 - Souse Roll	- 2/5lb



## Deli Loaf

344746 - Sunset Farm Hot Souse Loaf	- 2/7lb
344744 - Sunset Farm Mild Souse Loaf	- 2/7lb



PASSION

is our

secret

ingredient



# Cheese



## Cheese Loaves



### DIETZ & WATSON

404000 - Oven Roasted Garlic	- 2/5lb
404001 - Cheddar Horseradish	- 2/5lb
404002 - Monterey Jack	- 2/5lb
404003 - Cheddar w/Hot Peppers	- 2/5lb
404004 - Cheddar w/Buffalo Wing Sauce	- 2/5lb
404005 - Mini Horn Colby	- 2/6lb
404006 - Danish-style Havarti	- 2/5lb
404010 - Swiss	- 2/8lb
404015 - Lacey Swiss	- 1/10lb
404016 - Swiss 4x6	- 4/8lb
404020 - Baby Swiss	- 2/5lb
404025 - Gouda Wheel	- 1/9lb
404026 - Smoked Gouda Wheel	- 1/9lb
404984 - Swiss Loaf 4x4	- 6/7.5lb
407610 - Muenster Loaf	- 2/5lb
408000 - Pepperoni	- 2/5lb
408005 - Provolone Loaf	- 2/6lb
408028 - Mozzarella Loaf P/S	- 2/5lb
408410 - Provolone Loaf	- 6/6lb
410330 - Yellow American Loaf	- 6/5lb
410334 - White American Loaf	- 6/5lb

# Cheese Loaves

## Domestic & Natural Block Cheeses



- 404970 - Brewster Swiss - 2/12lb
- 404018 - Daisy Red Wax Cheddar - 1/22lb
- 404019 - Amish Clas.Orange Rind Muenster - 2/6lb
- 404060 - Nasonville Mild Cheddar Y. Block - 1/40lb
- 404061 - Mild Cheddar Yellow Loaf - 1/10lb
- 404062 - Nasonville Pepper Jack Loaf - 1/10lb
- 404063 - Nasonville Monterey Jack Loaf - 1/10lb
- 408032 - Jacobo's Part Skim Mozzarella Loaf - 8/6lb
- 408034 - Jacobo's Whole Milk Mozzarella Loaf - 8/6lb
- 408038 - Jacobo's Provolone - 6/6lb



## Imported Cheeses Loaves & Wheels



- 404580 - Gayo Azul Gouda Wheel - 1/10lb
- 405060 - Gayo Azul Swiss Emmentaler - 2/14lb
- 407401 - Don Alvaro Manchego Wheel - 2/6lb
- 404097 - Ammerlander Havarti Cheese - 4/6.6lb
- 404099 - Ammerlander Gouda Loaf - 4/6.6lb
- 472185 - Ammerlander German Swiss Loaf - 3/8lb
- 472187 - Muhlenhof Swiss Loaf - 3/8lb



# Cheese

## Hispanic Cheeses



### GAYO AZUL

- 404830 - Queso Blanco Loaf - RW\* - 4/2.5lb
- 404820 - Queso Blanco Loaf - 4/5lb
- 404054 - Queso Blanco for Frying - 4/5lb

\*RW - Random Weight

### EL AUTÉNTICO

- 410048 - Queso Fresco - RW Wheel - 3/5lb
- 410050 - Queso Blanco RW - 8/2.5lb
- 410052 - Queso Blanco RW - 4/5lb



### EL VENADITO

- 410062 - Queso Blanco Loaf - 4/5lb
- 410064 - Queso Blanco Low Salt Loaf - 1/40lb



### EL REAL

- 410072 - Queso Fresco Wheel - 3/5lb
- 410074 - Queso Seco RW - 1/40lb
- 410076 - Queso Fresco Wheel - 2/7.5lb
- 410078 - Queso Oaxaca Bola - 4/5lb





## Bongards



### CHEESE

- 404021 - Yellow American Cheese Loaf - 6/5lb
- 404022 - White American Cheese Loaf - 6/5lb
- 404076 - Feather Shred Cheddar Cheese - 4/5lb
- 404078 - Fancy Shred Monterey Cheese - 4/5lb
- 404080 - Feather Shred Mozzarella Cheese - 4/5lb
- 404082 - Cheddar & Monterey Fancy Shred - 4/5lb
- 410260 - White American Cheese 120 Slices - 4/5lb
- 410320 - White American Cheese 160 Slices - 4/5lb
- 410400 - White American Cheese Block - 6/5lb
- 410460 - Yellow American Cheese 120 Slices - 4/5lb
- 410620 - Yellow American Cheese 160 Slices - 4/5lb
- 410840 - Yellow American Cheese Block - 6/5lb
- 411060 - White American Swiss 160 Slices - 4/5lb
- 412112 - Italian Blend Shred Cheese - 4/5lb

### CHEESE PRODUCT

- 404048 - White American Cheese 160 Slices - 4/5lb
- 410321 - Yellow American Cheese 160 Slices - 4/5lb
- 410322 - Yellow American Cheese 120 Slices - 4/5lb
- 410325 - White American Cheese 160 Slices - 4/5lb
- 410327 - Yellow American Cheese 160 Slices - 4/5lb
- 410621 - Yellow American Cheese 160 Slices - 4/5lb

# Retail-Ready



## Salumeria Italian Brand



### DIETZ & WATSON

- |                                      |           |
|--------------------------------------|-----------|
| 342210 - Sopressatta Chub            | - 12/7oz  |
| 342212 - Abruzzese Salami Chub       | - 12/7oz  |
| 342202 - Genoa Salami Chub           | - 15/10oz |
| 342203 - Pancetta Chub               | - 10/1lb  |
| 342204 - Bologna Ring                | - 12/1lb  |
| 342205 - Pepperoni Twin Sticks       | - 10/12oz |
| 342213 - Cacciatore Dry Sausage Chub | - 15/13oz |
| 342214 - Mini Hard Salami            | - 12/7oz  |



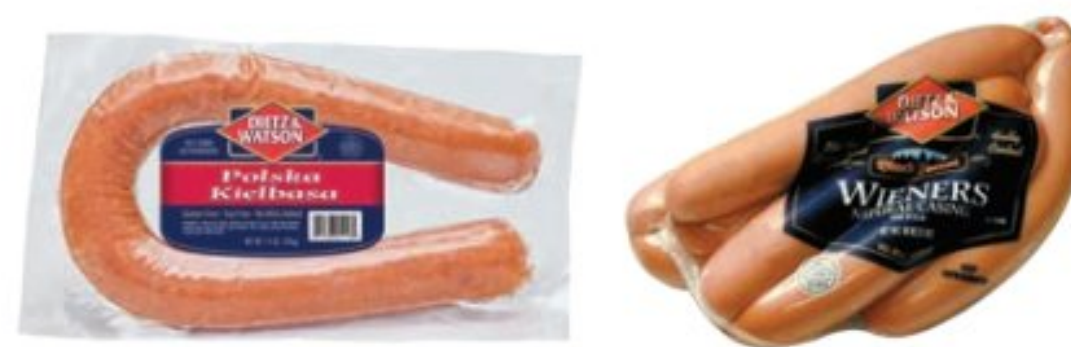


## Sausages

### DIETZ & WATSON

392001 - Beef & Pork Franks	- 24/1lb
392007 - German Wiener N/C	- 7/14oz
392009 - Cheddarwurst	- 6/1lb
392012 - Smoked Hung Bratwurst	- 6/1lb
392013 - German Knockwurst	- 6/1lb
392014 - Regular Foot Long Franks	- 3/3lb
392016 - Special Foot Long 3/1 Franks	- 4/2lb
392017 - New York-style Beef	- 7/1lb
392022 - Cocktail Beef Franks	- 12/14oz
392023 - Gourmet Lite Franks	- 12/1lb
392055 - NY Deli Beef Franks	- 12/1lb
392056 - Bratwurst Thuringer	- 6/1lb
392408 - Polska Kielbasa	- 6/1lb
392333 - Polish Kielbasa	- 12/14oz
392427 - Hot Smoked Sausage	- 12/1lb
394533 - Jerk Chicken Sausage	- 8/12oz

394516 - Italian Chicken Sausage	- 8/14oz
394517 - Pepper & Onion Italian Sausage	- 8/14oz
394504 - Pepper & Onion Chicken Sausage	- 8/12oz
394532 - Italian Sausage	- 8/12oz
394531 - Andouille Chicken Sausage	- 8/12oz
394534 - Buffalo-style Chicken Sausage	- 8/12oz
394513 - Chicken Bratwurst	- 8/14oz
394525 - Chicken Bratwurst	- 8/12oz
342208 - Landjaeger Salami Stick	- 24/2oz
394530 - Baurenwurst Net Casing	- 6/1.16lb
395500 - Mini Chorizo	- 12/6oz



## Pre-Sliced Case Ready

### DIETZ & WATSON

391013 - P & P Loaf Shingles	- 10/7oz
391015 - Chicken Breast Buffalo-style	- 10/7oz
391023 - Meat Bologna	- 10/7oz
391025 - Corned Beef	- 10/7oz
391027 - Black Forest Ham	- 10/7oz
391031 - Cooked Ham	- 10/7oz
391033 - VA Lite Gourmet Ham	- 10/7oz
391035 - Pastrami	- 10/7oz
391039 - Golden Brown Turkey Shingles	- 10/7oz
391041 - Cooked Salami	- 10/7oz
391043 - Genoa Salami	- 10/7oz
391044 - Sopressatta	- 12/3oz
391047 - Mortadella	- 12/3oz
391049 - Prosciutto	- 12/3oz
391052 - Roast Beef	- 10/7oz
391053 - Honey Turkey	- 10/7oz
391055 - Tavern Ham W/A	- 10/7oz
391057 - Black Forest Smoked Turkey	- 10/7oz
391092 - Turkey Gourmet Lite Sliced	- 10/7oz
394600 - Ham Breakfast Fillets	- 8/12oz
395048 - Turkey Breast Fillets	- 12/7oz



# Retail-Ready



## Cheeses



### DIETZ & WATSON

410336 - White American Slices	- 20/8oz
410508 - Pepper Jack Pre-Cut	- 14/12oz
410515 - Gouda Pre-Cut	- 14/12oz
410543 - Smoked Gouda Wedge	- 14/12oz
410549 - Mozzarella Pre-Cut	- 12/8oz
410551 - Havarti w/Dill Pre-Cut	- 12/8oz
410553 - Muenster Pre-Cut	- 12/8oz
410561 - Danish Havarti Pre-Cut	- 12/8oz
410562 - Edam Pre-Cut	- 6/12oz
410563 - Baby Swiss Pre-Cut	- 12/8oz
410564 - Jarlsberg Pre-Cut	- 12/8oz
411010 - Swiss Slices	- 20/8oz
471432 - Yellow American Slices	- 20/8oz
471433 - Cheddar w/Peppers Slices	- 12/8oz
471434 - Cheddar w/Horseradish Slices	- 12/8oz
471435 - Cheddar w/Garlic Slices	- 12/8oz
471436 - Muenster Slices	- 20/8oz
471437 - Provolone Slices	- 20/8oz