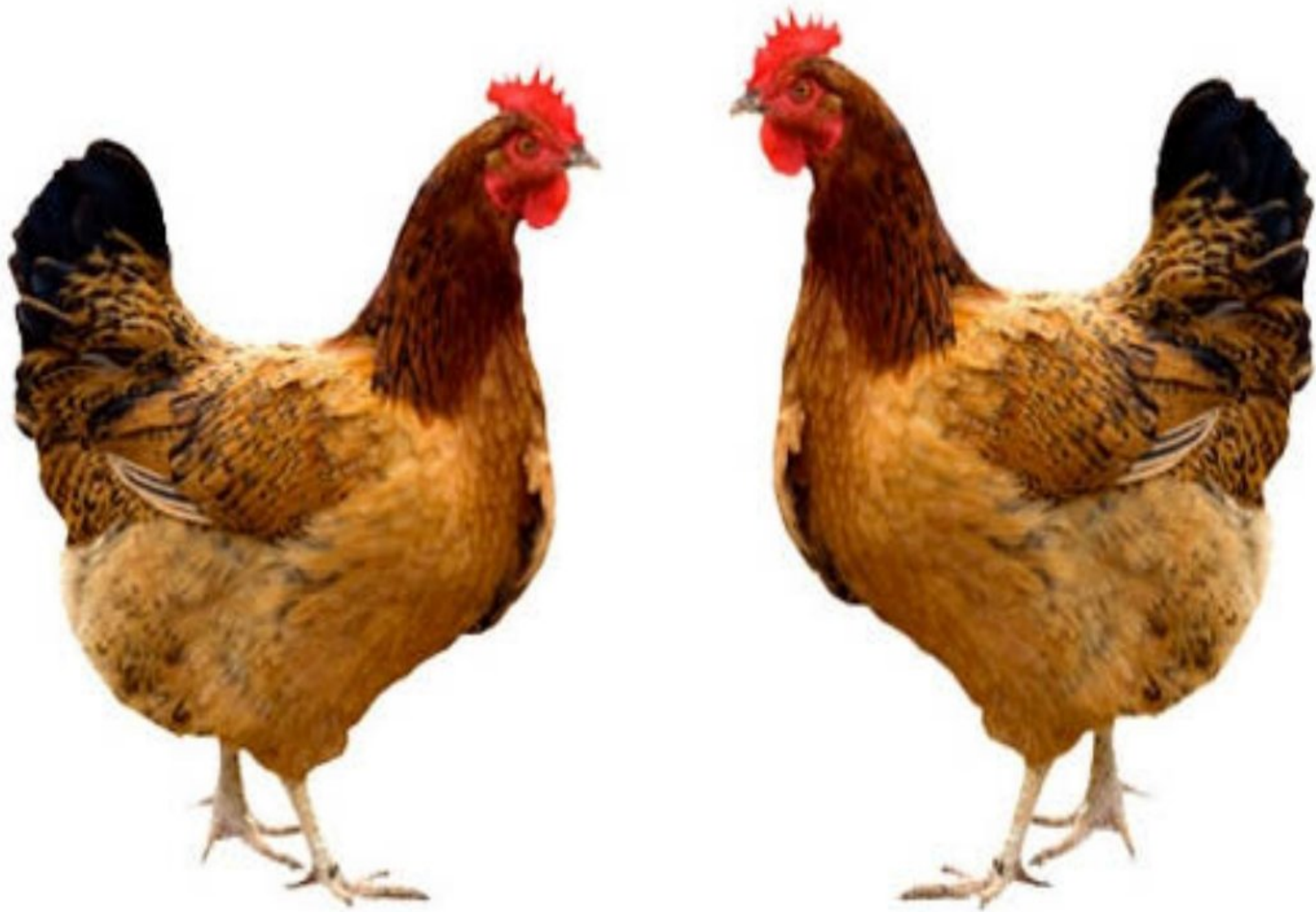


Product Line
Poultry







Chicken

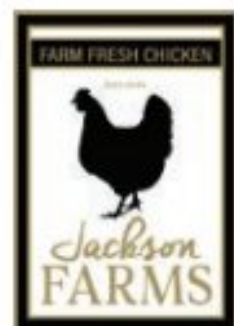
Poultry is one of the most widely eaten types of meats globally and we're proud to offer some of the very best. It provides nutritional benefits and its versatility in preparation is one of the reasons why it is one of the most preferred proteins.



Fresh Roasters & Parts

CVP/CO2 packing

CUTS	DESCRIPTION
	Whole Roasters 8 week old chicken, with giblets. Sizes:6-8lb
Legs	Whole roaster leg without back
Drumsticks	Roaster drumstick
Wings	Whole roaster wings (3-joint)
	
	



Whole Fryers, WOGS & Parts



CUTS	DESCRIPTION
Fresh	
Whole Fryers	Young chicken, 6-8 weeks old, sizes:2.5-6lb, dressed weight Packing: CVP/CO2/Bagged/Individually Wrapped & Cryovac
Fryers - WOGS	Whole fryers without giblets, sizes: 2.5-6lb, dressed weight
Frozen	
Whole Fryers	Young chicken, 6-8 weeks old, sizes:2.5-6lb, dressed weight Packing: CVP/CO2/Bagged/Individually Wrapped & Cryovac
Fryers - WOGS	Whole fryers without giblets, sizes: 2.5-6lb, dressed weight

Boneless Parts Fresh/Frozen



CUTS	DESCRIPTION
Fresh	Packing: CVP/CO2 Cases: 4x10lb, 10lb CW & EW bags
Breasts	Deboned & Skinless Breast Muscle w/o Tenderloin
Breast Tenderloin	Deboned & Skinless Inner Breast Meat
Leg Meat	Deboned & Skinless Thigh & Drumstick meat
Thigh Meat	Deboned & Skinless Thigh Meat
Frozen	Packing: CVP/CO2 Cases: 4x10lb, 10lb CW & EW bags
Boneless Breasts	
Breast Tenderloins	
Boneless Leg Meat	
Boneless Thigh Meat	
IQF-Individually Quick Frozen Packing: 10lb, 5lb, 2.5lb and 2lb bags	



100% Natural



Breasts

Fresh/Frozen



CUTS

Fresh (Bone-in)
Whole Breasts

Split Breasts
Miscut Breasts

Frozen (Bone-in)
Whole Breasts

Split Breasts
Miscut Breasts

DESCRIPTION

Packing: CVP/CO2, Cases: 40lb
Entire fryer breasts, two lobes, bone-in, skin-on & skinless available
1/2 off whole, one lobe
Plant grade- whole & split breasts, may have defects

Packing: CVP/CO2, Cases: 40lb
Entire fryer breasts, two lobes, bone-in, skin-on & skinless available
Fryer breast quarter with wing
Plant grade- whole & split breasts

Wings

Fresh/Frozen



CUTS

Fresh Wings
Regular & Jumbo
Party Wings

B-Wings

Frozen Wings
Regular/Med/Jumbo
Miscut Wings
B-Wings / Economy

DESCRIPTION

Packing: CVP/CO2, Cases: 4x10lb, 1x40lb, 8x5lb
Whole Wings (3-joint: drummette, mid-section, tip)
1st & 2nd Joint - separated (drummette & mid section, separately)
Miscut, Bruised, Red Tips

Packing: CVP/CO2, Cases: 4x10lb, 1x40lb, 8x5lb
Based on Live Weight
Plant Grade - Whole Wings
Miscut, Bruised, Red Tips



Leg Quarters (Back In)

Fresh/Frozen



CUTS

Fresh

Leg 1/4's - Bulk

Frozen

Leg 1/4's - Bulk

Leg 1/4's - Bag

DESCRIPTION

Packing: CVP/CO2, Cases: 40lb

Fryers/Broiler whole leg with portion of back

Sizes: Small, Medium, Large, Jumbo

Packing: CVP/CO2, Cases: 40lb

Packing: 10lb Poly Bag, Cases: 40lb

Thighs & Drums

Fresh/Frozen



CUTS

Fresh

Thighs

Drumsticks

Frozen

Thighs

Drumsticks

DESCRIPTION

Packing: CVP/CO2, Cases: 40lb

Fryers/Broiler leg cut above the knee/drumstick

Packing: CVP/CO2, Cases: 40lb

Packing: CVP/CO2, Poly Bag, Cases: 40lb

Offals

Fresh/Frozen



Fresh

Gizzards

Livers

Backs

Necks

Hearts

Frozen

Gizzards

Livers

Backs

Necks

Hearts

Feet

Paws



Sustainably
Farmed

Turkey

Versatility in preparation is what makes turkey popular. Use dry or moist methods of cooking, including roasting, broiling, grilling, pan-frying, braising and stewing.



Frozen Roasters & Parts



CUTS

Whole Turkeys

DESCRIPTION

Sizes: 4-30lb (4-9.5, 8-10, 10-12, 12-14, etc)
 Packing: Individually Vacuum Packed
 Cases: 2 or 4 whole birds per case
 Grading: A Grade or Plant Grade, Basted or Natural



Bone-In Breasts

Sizes: 8-10lbs, 10-12lbs, 12-14lbs, 14-16lbs, 16-18lbs, 18-20lbs
 Grading: A Grade or Plant Grade, Injected or Natural



Drumsticks

Sizes: Tom or Hen (Smaller)
 Packing: Bulk w/Poly-Liner - Cases: 30lb



Wings
 2-Joint or 3-Joint

Sizes: Tom or Hen (Smaller)
 Packing: Bulk w/Poly-Liner - Cases: 30lb

Boneless Parts

Frozen



CUTS

DESCRIPTION

Breast Meat

Packing: Bulk w/Poly-Liner, Cases: 40lb

Thigh Meat

Packing: Bulk w/Poly-Liner, Cases: 40lb

Tenders

- Natural (Strap-in)

Packing: Bulk w/Poly-Liner, Cases: 40lb

Tenders

- De-Strapped

Packing: Bulk w/Poly-Liner, Cases: 40lb

Other Parts

Frozen



CUTS

DESCRIPTION

Drumettes

Packing: Bulk w/Poly-Liner, Cases: 30lb

Gizzards

Packing: Bulk w/Poly-Liner, Cases: 30lb

Necks

Packing: Bulk w/Poly-Liner, Cases: 30lb

Tails

Packing: Bulk w/Poly-Liner, Cases: 30lb

Ground and Smoked Parts

Frozen



CUTS

DESCRIPTION

Smoked Necks

Packing: Bulk w/Poly-Liner, Cases: 30lb

Smoked Tails

Packing: Bulk w/Poly-Liner, Cases: 30lb

Smoked Drums

Packing: Bulk w/Poly-Liner, Cases: 30lb

Ground Turkey

Cases: 2x10lb, 12x1lb

Smoked Turkey Wings

Packing: Bulk w/Poly-Liner, Cases: 30lb



Hen

Cornish game hens are small pump chickens that produce a greater amount of white meat in comparison to their dark meat. Very tender and flavorful, hens are easy and quick to cook.



Frozen Hens



CUTS

Gallina/Baking Hen
 Whole Guinea Fowl
 Spent Hen, Head-on, Feet-on
 Spent Penny Hen
 Whole Quail Bone-in

DESCRIPTION

Sizes: 6x5-7lb
 Sizes: 8x2.5lb
 Sizes: 10x2-2.5lb
 Sizes: 15x1.8-2lb
 Sizes: 6x6x4.5oz

Frozen Cornish Hens



CUTS

Cornish Hens - Single Pk
 Cornish Hens - Twin Pk

DESCRIPTION

Sizes: 24x16oz
 Sizes: 12x2x20oz



Duck

Duck has a darker and richer meat. Nutty and strong flavor, but not overpowering. Versatile, it can be cooked in a lot of ways, including roasting, broiling, grilling, pan-frying, braising and stewing.



Whole Duck



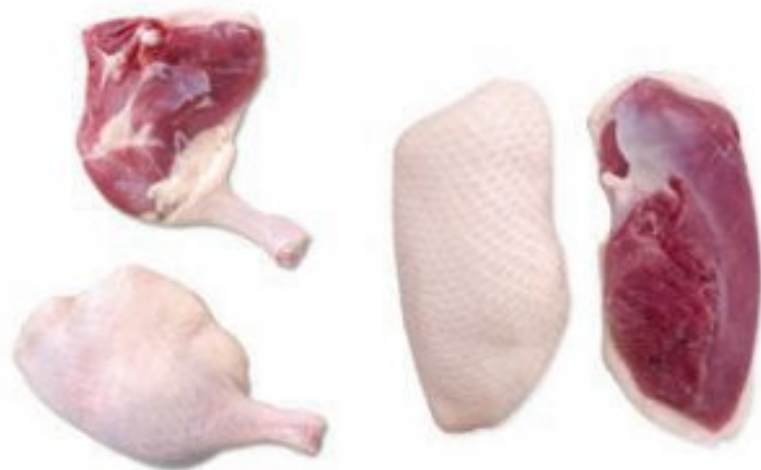
CUTS

Whole
Whole

DESCRIPTION

Grade A
Head and Feet On

Duck Parts



CUTS

Leg
Breast
Smoked Breast
Leg Quarters

DESCRIPTION

Boneless, Skin-on
Boneless, Skin-on

Quail

Tiny, simple and flavor-packed: a bird with a hint of the wild! You can roast quail or fry them, braise, grill, broil or sauté them. Delicate and very moist, a flavor to remember!



Whole Quail



CUTS

Frozen

Bone-in, WP

DESCRIPTION

Packing: WP

Cases: 10lb

6x4.5oz (6 trays/case, 4pcs/tray)

